



Winter Camp Park

A Community Gathering Place

Spring 2023



Established 2015

Winter Camp Park is being built and maintained solely with contributions of funding, time and talents of neighbors within The Woods community. The park is open to all Homeowners, Residents, and their Guests.

NO MEMBERSHIPS, NO FEES!

Our goal is to continue to create and maintain it solely with volunteer funding.

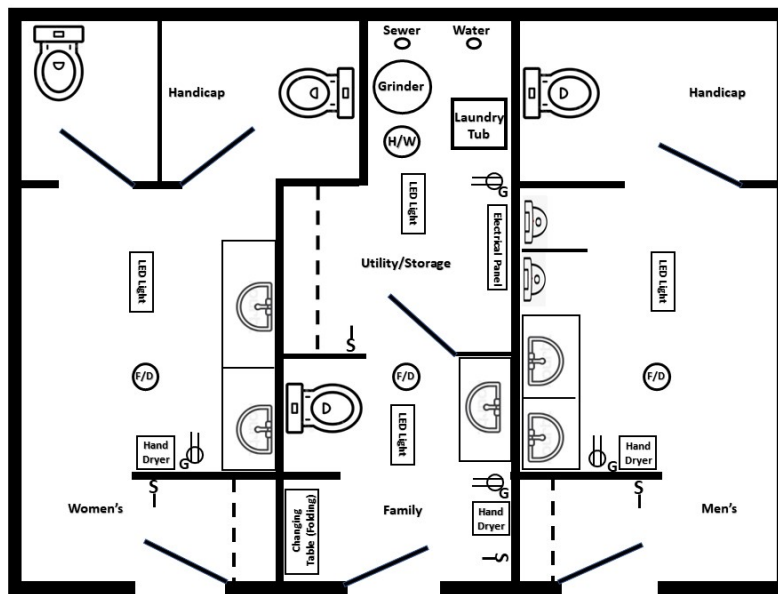
It is privately owned by some homeowners and is NOT associated with

WHOA, PVP, or The Woods Club.

Donations are greatly appreciated!

Restroom Update & Fundraiser





Winter Camp Park Restrooms/Utility/Storage Facility (20' x 28')



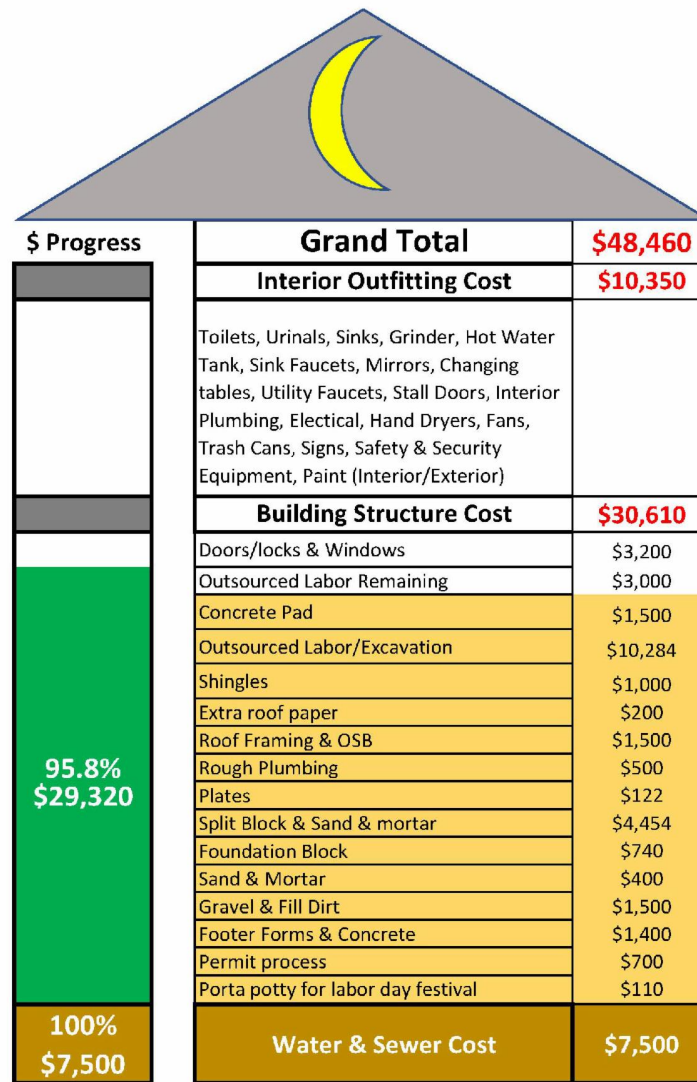
Floor & Studded Walls - March 2023

We have been able to make good progress on the Restroom project. Phase 1 and most of Phase 2 are complete, and Phase 3 (the last phase) will begin soon. So far, the following has been accomplished: water & sewer installed, excavation and construction of footers, exterior walls, roof, rough in plumbing, concrete floor poured, interior framing begun. Now for the home stretch!

The remaining Phase 2 and Phase 3 work includes installing doors, locks, and electricity, painting/sealing the floor and interior concrete walls and completing framing, walls and purchasing and installing all interior fixtures.

Since 2021 our generous community and corporate supporters have contributed over \$34,000! We need about \$11,500 to complete this needed project. Please consider using your tax refunds to contribute to this worthy effort☺. Go to the [Contribute](#) page to see ways to contribute, and if you want it to go specifically to the Restroom, let us know on your check or in an email.

The current funding and progress status is shown below.



Wednesday Social Hours and Upcoming Events

Wednesday Socials started April 5th, with the first two weeks having 33 and 29 attendees, respectively, with several newbies and great food!

Maryann Valcourt, our Wednesday coordinator, has setup an online calendar for folks to volunteer in helping with the social hours. Please consider volunteering this year. Go ahead and sign up via this [link](#). Please arrive at the park around 4:30 to set up. The duties are printed out and taped to the Tupperware box.



MARK YOUR CALENDARS:

10 June - WHOA Community Celebration

30 September - WHOA Fall Festival

Please watch out for emails and postings from WHOA for more information.

2 September - Winter Camp Park Annual Music Festival (Live Bands and

Food). More information will be provided in the Summer Newsletter!

When there are special events at the park, there will be signs posted on where to park.

Before entering the park, there will be 2 signs on the right-hand side. We ask that large trucks/SUV's, to please park on the gravel road immediately after the park entrance on either side. The second sign will tell cars and handicap vehicles to proceed into the park.

There will be an additional sign on the left showing you that cars and small trucks/SUV's should turn right into the newly constructed parking area. Park at an angle and make sure that there is room for a vehicle to pass behind.

That same sign will point you to the Handicap area which is on the back left-side of pavilion #1 next to the new restroom

There will be No Parking signs at certain areas. Please adhere to those signs. Depending on the event, there will be a designated traffic coordinator(s) to assist.

Spring Cleanup and Other Tasks

The park cleanup on 28 March was very successful with 18 volunteers including some new friends showing up and completing all the chores in about 3 hours.

After the damage to the bulletin board this past winter, we have poured a concrete pad, added stronger posts, moved the old roof over and physically rebuilt the board. Personal thanks to Paul Tyson and his lawn tractor. Paul lifted the roof from the old structure; then we made some modifications and then remounted it to the new posts!

The new walking bridge will be getting handrails within the next couple of weeks.



Park & Pavilion Activities

The pavilions and the event stage in the park are available to be reserved by Woods homeowners and residents for personal use, as was used many, many times last year. The pavilions were reserved for: birthday parties, farewell parties, band practices, church potlucks, committee meetings and discussion groups, family reunions, golf group gatherings, hiking club events, and a wedding and reception. Soon, we will be adding the covered sails to the stage!

If you need to reserve the pavilion(s) or the event stage, please go to our [Reserve Facilities Form](#). Before filling out the form, please check the [Calendar](#) first to ensure it is available on the day and time you want it. Please read the Facilities form carefully. Donations for using the facilities are greatly appreciated and critical to the maintenance, operation, taxes, insurance, IT support, and upkeep of the park, including electric/water bills, grass cutting, etc.

Our Generous Neighbors and Friends

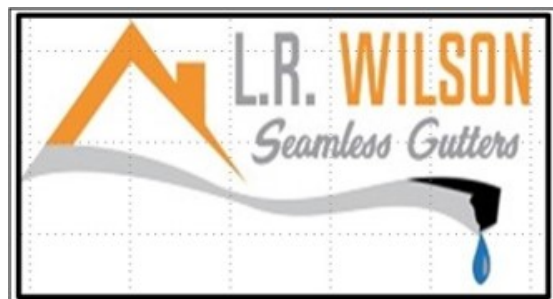


We continue to invite all Woods neighbors to join us as a Friend of Winter Camp Park! With the continued support of our community, we will be able to further enhance the Park for the whole Woods Community to enjoy. For more details on becoming a “Friend” check out our [Contribute](#) page.

The park is opened for use by the Woods Community and their Guests. When we decided to start this endeavor, our intent was to fund the initial purchase and cleanup of the area and to “request” donations from the community to operate and increase the park’s capability. When you reserve any of our facilities, we politely ask that you consider a donation to the park. Just like any other recreational facility, we have bills to pay. Our estimated expenses for 2023 will be around **\$12,000**.

Corporate Friends of Winter Camp Park

Four years ago, we started the Corporate Friends initiative asking businesses that serve the Woods residents to become a yearly corporate sponsor of the park. Letters were sent to those, asking for renewal, and to other businesses which support the Woods community to participate in this program for a yearly minimal donation of \$250. As you click on the corporate sponsors' logo below, it will take you to their respective website or email address. If you use any of our supporters, mention that you saw their ad in the WCP Newsletter and thank them for their support. If you or a company you know of are interested in being a corporate sponsor, please contact us. Additionally, you can view the Corporate Form [here](#) and print it out and just hand it to your contractor. Check





- If you do not want to receive any future mailings, please click on the "unsubscribe link" below.
- If you know of anyone in The Woods community who is not receiving this mailing, please forward this email to them and have them provide us with their email address.

email - WinterCampPark@wintercamppark.com
website - www.WinterCampPark.com

Winter Camp Park | 1888 Wintercamp Trail, Hedgesville, WV 25427

[Unsubscribe wintercamppark@wintercamppark.com](mailto:wintercamppark@wintercamppark.com)

[Update Profile](#) | [Constant Contact Data Notice](#)

Sent by wintercamppark@wintercamppark.com powered by



Try email marketing for free today!